



# St. Patrick's High School Keady

RESPECT FOR YOURSELF AND CONSIDERATION FOR OTHERS



PROSPECTUS  
2026



# SCHOOL INFORMATION



**St Patrick's High School  
Middletown Road  
Keady  
Armagh BT60 3TH**

**Tel: +44(0)28 37531393**

**Fax: +44(0)28 37538**

**Email: [info@stpatricks.keady.ni.sch.uk](mailto:info@stpatricks.keady.ni.sch.uk)**



# Contents

## About Us

Primary Partner Links  
Mission Statement  
Student Leadership  
Spiritual Life

## Pastoral Care

Pastoral Structure  
Intervention and Support  
House System

## School Day

Uniform  
Timetable

## Curriculum

Key Stage 3  
Key Stage 4  
Sixth Form  
Careers Education Information  
Advice and Guidance  
Learning Outside the Classroom

## The Next Chapter

Leavers Destinations  
The Next Chapter





# WELCOME TO OUR SCHOOL

It is with great pride and pleasure that I warmly welcome you, and your family, to St Patrick's High School. Students in St Patrick's are happy and cared for, we have high expectations and instil an aspirational mindset.

We are an all-ability, co-educational Catholic school where every child is recognised and celebrated as an individual. Our child centred focus ensures that each and every child is guided and supported to shine, both inside and outside the classroom.

St Patrick's is a vibrant learning environment, and this inclusive, caring community ensures success for all in every aspect of school life.

At St Patrick's High School, we are committed to providing a holistic education that nurtures the mind, body, and spirit. Our dedicated staff work tirelessly to create a supportive and stimulating environment, where academic excellence is achieved, alongside personal growth and spiritual development. We believe that every child has unique gifts and talents, and it is our mission to help them discover and develop these to the fullest.

Our Catholic ethos and faith are at the core of everything we do. It guides our values and shapes our actions, fostering a sense of respect, compassion, and service to others. Our motto "*Respect for yourself and Consideration for others*" drives us in all we do.

We offer a broad and balanced curriculum that caters to the needs of all our students, ensuring they are well-prepared for whichever future pathway they choose to follow. It is our hope that every child will succeed and follow a path that brings happiness, satisfaction and where they can contribute effectively to society.

Our extracurricular activities provide rich opportunities for students to explore their interests and develop new skills, from sports and arts, to community service and leadership.

We are proud of our strong partnership with parents, parishes and the wider community. Together, we work to create a nurturing environment where students can thrive academically, socially, and spiritually.

Thank you for considering our school for your child's education. We look forward to welcoming you into our community and embarking on this exciting journey together.

Mrs K McKenna





# PRIMARY PARTNERSHIP

## TRANSITION

A particular strength of the school is the highly effective partnership with the local primary schools which supports pupils' transition, learning and development.

The strategic approach to drive forward the effective learning partnership with the primary schools has been a factor in improving teaching and learning

Dear Parent/Guardian

In St. Patrick's High School we share curriculum information, data, resources, training and expertise with our nine local Partner Primary Schools. Identifying each child's strengths, talents and particular needs enables us to provide even greater support for your child's transition to St. Patrick's High School.

The Derrynoose, Kilcluney and Tynan Learning Community Transition Programme ensures that every child will experience the highest possible level of support and success as they make the transition between Primary School and St. Patrick's. The programme of support will take account of the whole child, where no child is invisible.

The Transition Programme also ensures that all parents/guardians fully participate in the transition programmes for their children. It further ensures that innovation and excellence continue to be promoted, as we all work together in an environment that supports each child's development to achieve his/her full potential and to be caring and responsible members of our society both now and in the future.

Ciaran Monaghan  
Kieran McCrory

C. Duffy

J. Guy

P. Harte

S. Riley

R. Gallagher

Feena Hughes

G. Farrell

K. McKenna



# RESPECT FOR YOURSELF AND CONSIDERATION FOR OTHERS

## Mission Statement:

***“As a Catholic school in partnership with parents and the community, St Patrick’s seeks to provide children of all abilities with a secure, caring, stimulating and happy environment founded on values of hard work, personal integrity and quality learning and where all students are encouraged to develop their talents and character and to contribute positively to home, school, church and society.”***

St Patrick’s High School is a wonderfully inclusive all ability school. As a Catholic Lasallian school, we place great emphasis on the Christian values of inclusion, of mutual respect, of truth and justice. We were thrilled to retain our Inclusion Quality Mark in 2025/2026. The IQM assessor remarked that:

*“All who walk through their doors belong to a community where pupils will always be treated with respect. St. Patrick’s provides a happy, stimulating and vibrant learning environment focussed on helping students develop as effective independent learners and positive members of their community and society.”*

**We show respect by treating others like**

**Respect**  
**we would like to be treated**

**Integrity**  
**Taking pride in our faith as Catholics and pride in ourselves as well as our world**

**We achieve in our school by**

**Pu**



As a Catholic and a Lasallian school, we in St Patrick's are entrusted by parents to develop the academic, pastoral, social and spiritual interests of our students and to prepare our students to be integral members of a changing society. We celebrate our inclusive ethos and believe that learning is best achieved where students experience a sense of enjoyment and fulfilment in their work. In St Patrick's High School, each student is supported in the development of a personal ethos of self-improvement in a safe, secure and supportive environment. We work together to engender in our students positive attitudes and behaviours based on respect for self and others. We acknowledge the importance of our pastoral role in the welfare of all our young people and through our Mission Statement and ethos, every student is encouraged to be the best that they can be. As a community, we are committed to nurturing an understanding of our values and to equipping our students with the knowledge and skills to make informed decisions in light of these values.

Achieving  
the  
best we can be  
striving to be the

Being a mixed  
ability school

Equality

we are equal  
regardless of our  
abilities

pil

Positive  
Attitude

Having a positive  
mental attitude

to everyday  
school life

The Junior Leadership Team have compiled the following statement about the ethos of our school and how this is translated into everyday practice:

*"We, the pupils are always at the centre of every decision in school life. This is why we are at the centre of our Lasallian star. We then took the five principles of the Lasallian school and came up with a statement on how we live them in everyday school life. This means that we are a community that includes and welcomes all. We look out for our poor, as we know that to be poor can be in many forms, such as educational, financial and neglect. We, as a team, work together to help these people specifically in our school community".*



# STUDENT LEADERSHIP

## A WARM WELCOME FROM OUR HEAD PUPILS

A warm welcome to our future Year 8 pupils. We are the Senior and Junior Head Boys and Head Girls in St. Patrick's High School. It is our job to work with all our student leaders to ensure that everyone in our school feels happy, comfortable and secure. We are very proud of our school. We want to make sure that you enjoy your time in St. Patrick's High School and feel like you are a part of an inclusive school community where you can fulfil your potential. We are always here if you need a quiet word.

We run our own teams in the school and complete action plans to target areas we identify. Some of the groups we have formed this year and roles undertaken include :

- ✓ Ethos Group
- ✓ Eco Schools Group
- ✓ Careers Development Group
- ✓ Lead Learners
- ✓ Mentoring
- ✓ Primary Partnership Representatives
- ✓ Student Governor
- ✓ Keady Recreational Centre (KRC) Student Representative

We look forward to seeing you in our school.



Head Boy: Matthew



Head Girl: Aoife

## A Vibrant Leadership Model

The students are the central focus of our school and we firmly believe in involving our students in the decision-making process. Recognising that we need leaders at all levels, pupil participation in the leadership of the school is crucial for our success. We have a Senior and a Junior Leadership Team who work closely together to ensure that the Student Voice is listened to and heard.



## SPIRITUAL LIFE



As a Catholic school, we centre our mission on the person of Jesus Christ present and alive throughout our school community and in all aspects of school life. As such we ensure that our school is a loving, caring environment marked by strong Gospel values and example, emphasising the Catholic tradition in all we do.

St. Patrick's High School encourages each pupil to develop and nurture their own spiritual identity while respecting those of others.

We celebrate and embrace the uniqueness of everyone as we work together to deepen our relationship with God.



# EXCELLENCE IN PASTORAL CARE





## PASTORAL CARE

Pastoral Care in St Patrick's High School has at its centre the recognition of the uniqueness of each and every child in its care. We aim to create a safe and caring environment, where each student is valued, challenged and supported to achieve their full potential. The welfare of the individual student is paramount and we promote the full academic and personal development of our students within a child-centred Christian environment. As a Catholic school, we aim to live by our Gospel values of Respect, Love, Solidarity, Truth and Justice. To translate this vision into everyday practice, each class completes their own Values Charter, and reflect daily on their performance.

We expect the highest standards of behaviour from all of our students. Individual and class performance, attendance and behaviour targets are set and reviewed by pupils with their Form Teacher. Our reward system is linked to achievement of targets set.

We have a strong Pastoral Care system providing a network of support for all individuals. Each student within the community of St Patrick's High School is in the care of a Form Teacher who is guided by their Year Head. A Senior Leader is assigned to each year group and links closely with the Year Head to ensure quality of provision, intervention and support. The promotion of good relationships at all levels is fundamental. Consequently, we work in partnership with the school community and parents in the holistic education of our pupils and we pride ourselves in the positive relationships that we have forged.

We, in St. Patrick's High School, have a responsibility for the Pastoral Care, general welfare and safety of the children in our care.

We carry out this duty by providing a caring, supportive and safe environment, where each child is valued for his or her unique talents and abilities, in which all our young people can learn and develop to their full potential.





# EXCELLENCE IN PASTORAL CARE

Alongside a supportive PSE programme of study, Form Time across the whole school provides excellent opportunities for group discussion, where pupils can talk about a wide range of topics, issues and current affairs not connected to academic work. There are also plenty of opportunities during the school day when pupils can arrange to have a chat with a member of staff who they feel comfortable with.

A robust pastoral programme ensures that every pupil is known as an individual and given every opportunity to thrive. Important elements of this include:

- ♦ Regular pastoral meetings to discuss pupil needs
- ♦ A PSE curriculum which has been designed to promote positive relationships and to develop kindness, tolerance and respect for others.
- ♦ Transition Meetings at key points on the educational journey
- ♦ Peer Mentoring and Reading Partnership
- ♦ Regular target-setting and review of targets
- ♦ Regular pupil progress meetings/Raising Standards Meetings
- ♦ A robust programme of Careers Education, Information and Guidance

## Form Teacher

Each student is placed under the care and supervision of a Form Teacher who sees the student at the start of each day for Pastoral Registration.

## Senior Teacher

A Senior Teacher is assigned to each of our Year Groups and meets regularly with the Head of Year to monitor both academic and pastoral progress.

Excellence every day for every pupil



# EXCELLENCE IN PASTORAL CARE

Every child

## Student Leadership Team

The Student Leadership Team acts as role models for our young students and has a leading role in the pastoral care of our younger pupils.

## School Chaplains

The School Chaplains support our pupils at each Key Stage of their personal, emotional and spiritual development

## Head of Year

The school operates a Head of Year and Form Tutor system for each Year Group and class, facilitating a strong individual support network for pupils.

## Vice Principals






The Vice Principals will lead responsibility for Pastoral Care at each Key Stage and for ensuring that the needs of all pupils are met and opportunities for development optimised



Students vs Teachers soccer match!

## House System

All pupils in St. Patrick's belong to one of five 'Houses' named after Irish Saints.

 **St. Patrick**       **St. Brigid**       **St. Colmcille**  
 **St. Brendan**       **St. Malachy**

Pupils are awarded credit marks for good behaviour, effort and attendance.

There are artistic and sporting competitions organised during the year where pupils can win points for their House.

The pupils in the House that gain the most points during the year are treated to a special trip at the end of the year.



# EXCELLENCE IN INCLUSION







## The Haven

Our Learning Support Centre, The Haven, is dedicated to serving students from Years 8 through to 12. In The Haven we firmly believe that every single student has unique talents and deserves to learn in an inclusive and nurturing learning environment.

Our message is simple, yet powerful: ***to provide a safe haven where students with special needs can embrace their full potential and thrive holistically – socially, emotionally spiritually and academically.*** We strive to create a warm and inviting atmosphere where each student feels not only accepted, but also celebrated for their individual abilities.

Inclusivity lies at the heart of everything we do. Our dedicated team of highly trained professionals works tirelessly to ensure that every student is supported, encouraged and included in all aspects of life at St. Patrick's High School. We understand that every child is different and we therefore tailor our approach to meet their specific needs.

The Haven comprises of two classes, one in Key Stage Three and one in Key Stage Four.

***Key Stage 3: Induction and transition into the Key Stage 3 curriculum and foundations for transition into Key Stage 4.***

***Key Stage 4: Transition into Key Stage 4, preparation for adult life and leaving to further training or education.***

Data is used to inform learning and teaching within The Haven. Personalised Learning Plans reflect the needs of each student and transition plans are drawn up in Years 10 and 12 in order to direct the student to the next stage of learning.

In Key Stage 4 a bespoke timetable is created for each student in order to equip them with the qualifications and skills necessary to transition to further education or training programmes. Many students can integrate into mainstream GCSE subjects depending on their ability. There are opportunities to study academic and vocational subjects. Work experience opportunities are also provided in Key Stage 4 for those who wish to explore this option as part of their timetable.



# SCHOOL DAY

## UNIFORM

### GIRLS

Years 8 - 12 inclusive



- ▶ Inverted 4-pleat grey, knee length skirt (compulsory for ALL students)
- ▶ Pale blue blouse.
- ▶ School Clip-on tie.
- ▶ Maroon Sweater (winter months).
- ▶ Maroon tights (all year round).
- ▶ School blazer.
- ▶ Maroon (only) jacket/overcoat (optional).
- ▶ Black shoes. (no trainers/canvas)

### BOYS

Years 8 - 12 inclusive



- ▶ Black trousers.
- ▶ Pale blue shirt.
- ▶ School Clip-on tie.
- ▶ Maroon sweater (winter months).
- ▶ Grey/black socks.
- ▶ School blazer.
- ▶ Black shoes. (no trainers/canvas)

**Sixth Form students wear a stripe shirt and tie.**  
**Please ensure your child carries a school-bag and pencil case with necessary pens, pencils, calculator etc.**  
**Please donate any used uniform into the School Office.**

## CATERING

### Cashless Dining Hall

At St Patrick's High School we use a 'cashless' dining hall system. Every day we have deliciously healthy food options available.

Parents/Guardians can transfer money to their child's dinner account via the School Gateway App as required.

The App provides details of purchases and account balances.





A TYPICAL SCHOOL DAY

	mon	tue	wed	thurs	fri
01	RE 06 A28	Ir 32 B19	Sc 38 A11	TD 19 A6	PE 22
02	Gg 16 A23	Gg 15 A25	Sc 38 A11	TD 19 A6	PE 22
			BREAK		
03	Ma 43 A35	Fr 56 B18	Ma 43 A35	Fr 56 B18	RE 06 A28
04	En 34 B12	Sp 59 B15	Ma 43 A35	Hi 02 A27	Ma 43 A35
05	En 34 B12	RE 06 A28	Gg 15 A25	Sp 59 B15	En 34 B12
06	LUNCH	LUNCH	LUNCH	LUNCH	LUNCH
07	LI 32 B19	Ma 43 A35	RE 06 A28	Ma 43 A35	Ar 04 B6
08	LI 32 B19	Sc 38 A11	En 34 B12	Ma 43 A35	Hi 02 A27
09	Sc 38 A11	En 34 B12	Ir 32 B19	En 34 B12	Mu 13 A31

Fo - Form Period | Gg - Geography | Ma - Mathematics | Lu - Lunch | LI - Learning for Life & Work  
| Sc - Science | Ir - Irish | Sp - Spanish | RE - Religion | Hi - History | TD- Technology & Design |  
Ar - Art | PE - Physical Education | Mu - Music

SUBJECT

Understanding your timetable

TD

19

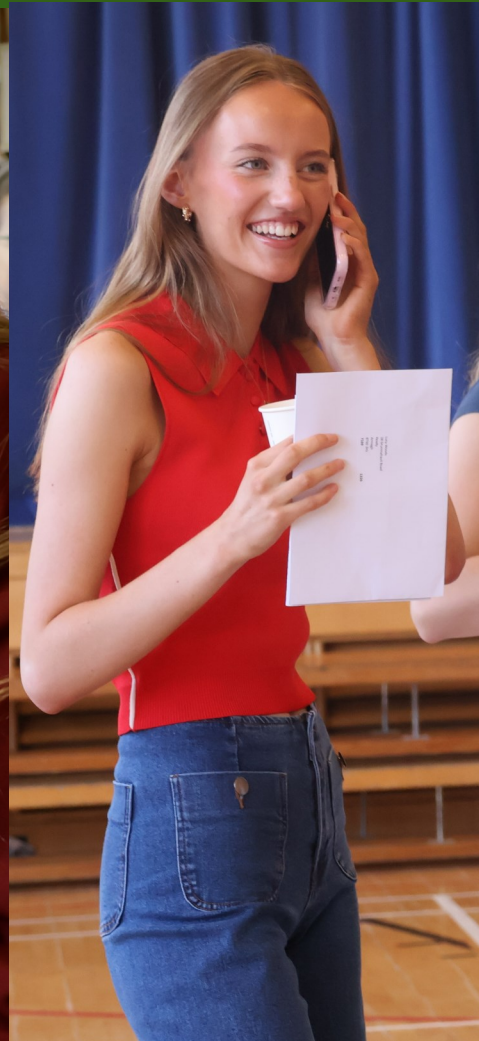
A6

ROOM  
NUMBER

TEACHER  
NUMBER



# EXCELLENCE IN THE CURRICULUM





# CURRICULUM STRUCTURE

## Key Stage 3

The subjects studied at Key Stage 3 are chosen to challenge and to develop a love of learning.

## Key Stage 4

At Key Stage 4 a wide range of academic and vocational subjects will be offered in order to meet the needs and range of ability of all our students. Our Careers Department works closely with students and their families to ensure effective and appropriate pathways are in place.

### Key Stage 3 Subjects Offered

Art & Design  
Citizenship  
Design & Technology  
Employability  
English  
French  
Geography  
History  
Home Economics  
ICT  
Irish  
Mathematics  
Music  
Personal Development  
Physical Education  
Religious Education  
Science

### Key Stage 4 Subjects Offered

Art & Design  
Business Studies  
Business & Communication Systems  
Child Development  
Construction  
Design & Technology  
Economics  
Engineering  
English Language  
English Literature  
French  
Geography  
Health & Social Care  
History  
Home Economics  
Learning for Life & Work  
Mathematics  
Mathematics – Further  
Moving Image Arts  
Music  
Physical Education  
Religious Studies  
Science (Single Award)  
Science (Double Award)  
Science (Applied)  
Statistics  
Level 2 Occupational Studies - Business & Services  
Level 2 Occupational Studies – Construction  
Level 2 Occupational Studies – Engineering  
Level 2 Occupational Studies – Technology & Innovation  
Level 2 Personal Success & Well-Being  
OCN Level 2 Extended Certificate in Applied Science  
OCN Level 2 Certificate in Information Technology Applications  
Prince's Trust Level 2 Certificate in Personal Development  
Essential Skills in Application of Number  
Essential Skills in Communication



# POST 16 CURRICULUM

## Key Stage 5 Subjects Offered

The school collaborates closely with schools in the Armagh Area Learning Community to offer pupils a wide range of Applied and General subjects at Post 16 Level.

**The following subjects are offered to current Post 16 pupils:**

### Non collaboration subjects

- GCE Art and Design
- GCE Biology
- GCE Chemistry
- GCE Construction
- GCE Food and Nutrition
- GCE Economics
- GCE Health and Social Care
- GCE History
- GCE Geography
- GCE Mathematics
- GCE Physics
- GCE Political Studies
- GCE Religious Studies
- GCE Sociology
- GCE Technology & Design
- Applied Business Studies
- BTEC ICT
- BTEC Creative Media
- BTEC Sport (Single & Double Award)
- BTEC Travel & Tourism
- Moving Image Arts

### Collaboration Subjects

- Spanish
- French
- Irish
- GCE Performing Arts

## Post 16 Curriculum

At Post 16 students may choose three or four A Levels and/or Level 3 courses from the following suite of subjects.

Subject choice will vary year on year, depending on the needs of students.

St Patrick's High School collaborates closely with the Armagh Learning Community to increase subjects offered at both Key Stage 4 and Post 16.



# EXCELLENCE IN CAREERS ADVICE

At St. Patrick's High School, we invest significant time in supporting our pupils in all aspects of Careers Education, Information, Advice and Guidance (CEIAG).

Pupils have the opportunity to develop knowledge and understanding of the labour market of the future. We provide a diverse range of trips and visits, presentations, courses and work-related learning, where pupils can explore the range of exciting possibilities ahead of them. Through engaging in Personal Career Planning, pupils are able to identify and subsequently develop the skills, qualities and expertise, both inside and outside of the classroom, to meet the demands of tomorrow's workplace. St. Patrick's works in partnership with the Careers Service at periods of transition.

Careers Education is embedded throughout the school curriculum, with up to date information available to all pupils in the main school library and Careers Department. The school actively promotes links with local industry, Third Level and Further Education establishments.

“**SPK Connect is about building bridges....It's about showing our young people what's possible and helping them develop the skills they need to thrive.**”

Mrs M Doyle  
(Chair of SPK Connect)



**SPK Connect is built on the belief that every young person, regardless of background or ability deserves access to inspiration and aspiration, guidance and opportunity.**”

Mrs K McKenna  
(Principal)



SEE IT, BELIEVE IT, BE IT





# EXTRA-CURRICULAR ACTIVITIES

In St. Patrick's High School, we recognise and celebrate the many talents of our pupils. We believe that participation in extra-curricular activities enhances the student's self-esteem and enables them to forge strong friendships outside the classroom. We also recognise the important role such activities play in developing strong relationships between pupils and teachers. We therefore offer a rich and varied range of extra-curricular activities.





LEARNING OUTSIDE THE CLASSROOM





## Tom Fox

My name is Tom and I studied Maths, Physics and BTEC Sport at A Level and I am now studying Biomedical Engineering in Ulster University Belfast.



## Roise McGeary

My name is Roise McGeary and I left St Patrick's in June 2025.

I studied A-level Geography, History and Spanish.

I am now studying International Business in Queen's University, Belfast.



esc



F1



F2



F3



F4

F5

F6



F7





**Catriona McArdle**

My name is Catriona McArdle and I studied A Level Geography, Biology and Food and Nutrition which enabled me to begin a Degree in Food Science and Nutrition in QUB.



**Gareth Lappin**

My name is Gareth and I studied Maths, Physics and Applied Business and I now am doing a Higher Level Apprenticeship in Accounting with Water Solutions, Newry.

**John Flanagan**

My name is John and I studied Maths, Physics and BTEC Sport as A-Levels. I now study Civil Engineering in Ulster University Belfast.

